

# THE JASPER HILL STORY

---



Settlement and the Extermination  
of Native Abenaki People's Began in  
the mid-1700s

The Land was Cleared and by 1800  
Vermont was mostly deforested

Thin soils were quickly depleted by  
grain production



# By 1820 Grain Production had migrated West

---

**By 1850 Vermont was the  
Merino Capital of the world  
with over 1.5 million sheep on  
the land.**

But not for long....





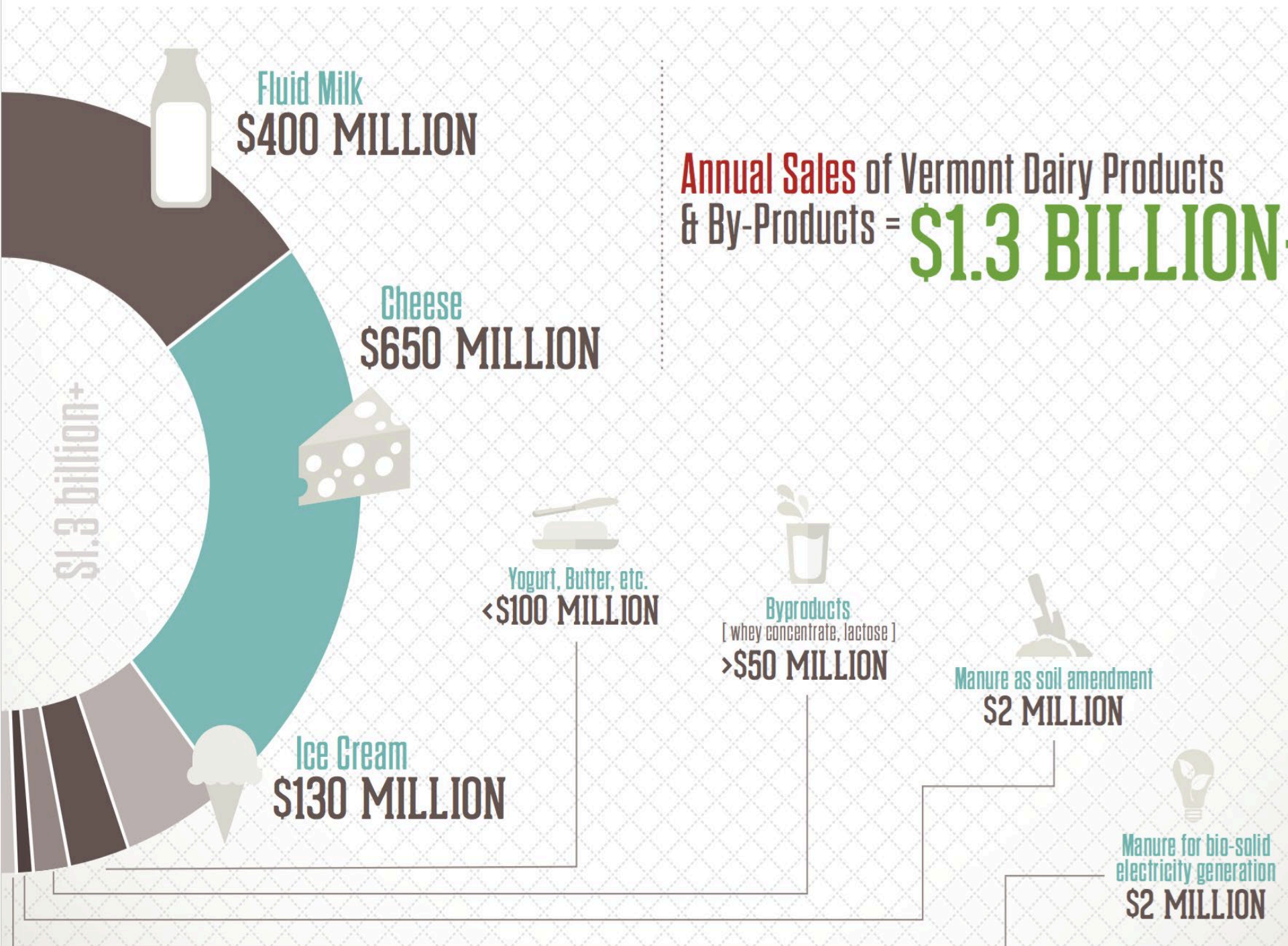
# Tariff Reductions on cheap Australian Wool went into effect in 1841

---

- So Vermonter's started milking cows
- In 1852 the first butter train arrived in St Albans
- By the 1890s St Albans, VT was considered the 'Butter Capital' of the world.
- By 1900, 186 creameries and 66 cheese factories operated throughout Vermont.
- In 1927, thirty percent of Vermont's population was engaged in farming, and there were twenty-seven thousand farms in the state.
- In 1925 the Lamoille Valley Creamery in East Hardwick produced 74K lbs of butter in the month of July from the milk of over 3000 cows.
- Agricultural production has been in decline ever since.







Fluid Milk  
**\$400 MILLION**



Cheese  
**\$650 MILLION**



Yogurt, Butter, etc.  
**<\$100 MILLION**



Byproducts  
[whey concentrate, lactose]  
**>\$50 MILLION**



Manure as soil amendment  
**\$2 MILLION**



Ice Cream  
**\$130 MILLION**



Manure for bio-solid  
electricity generation  
**\$2 MILLION**



**\$1.3 billion+**

# Get Big or Get Out

	LFO – over 700	MFO – 200 – 699	SFO –under 200	Total
2011	18	148	830	996 yr ave.
2012	17	145	810	972
2013	17	142	780	939
2014	25	129	726	880
2015	26	127	700	853
2016	27	138	673	838

\*LFO --- Large Farm Operation

\*MFO --- Medium Farm Operation

\*SFO --- Small Farm Operation



# IS IT ALL OVER BUT THE CRYING?

## Dairy Cow Farms by Size – Milking cows

	LFO – over 700	MFO – 200 – 699	SFO –under 200	Total
2020	35	100	198 CSFO – 501	636
2021	35	95	216 CSFO - 453	583
2022	35	91	215 CSFO – 424	549
2023	35	84	208 CSFO – 376	495

CSFO as of January 31, 2018. Certified Small Farms have 50 - milking cows to 199 cows.

This table represents the number of locations producing milk, not the number of farm operations within a specific size classification as some operations produce milk at more than one location.

NUMBER OF DAIRY FARMS 2003: 1450

NUMBER OF DAIRY FARMS SEP 2024: 468



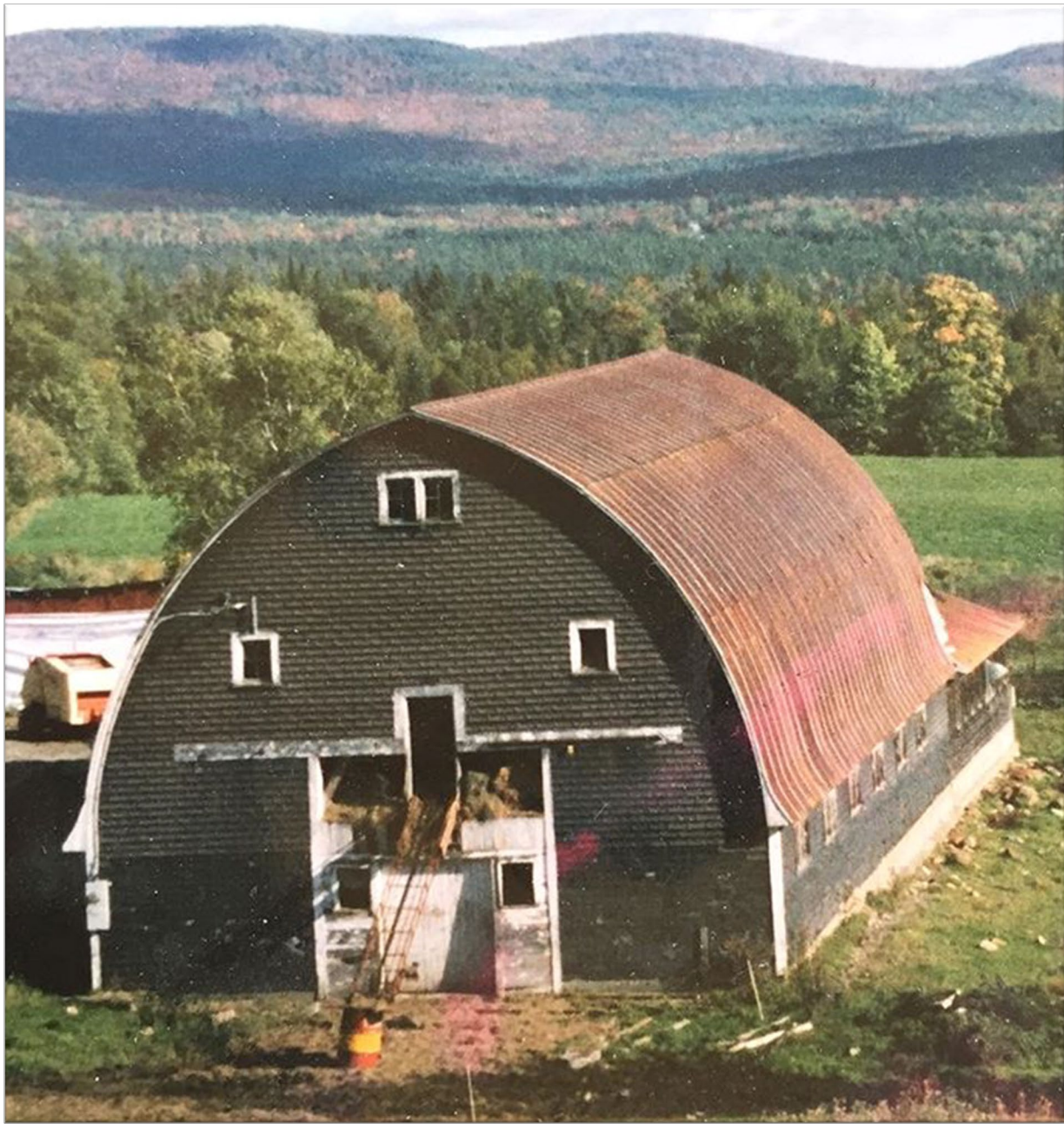
JASPER  
HILL  
FARM





CHEESE: A POWERFUL FORCE FOR GOOD!









JASPER  
HILL  
FARM





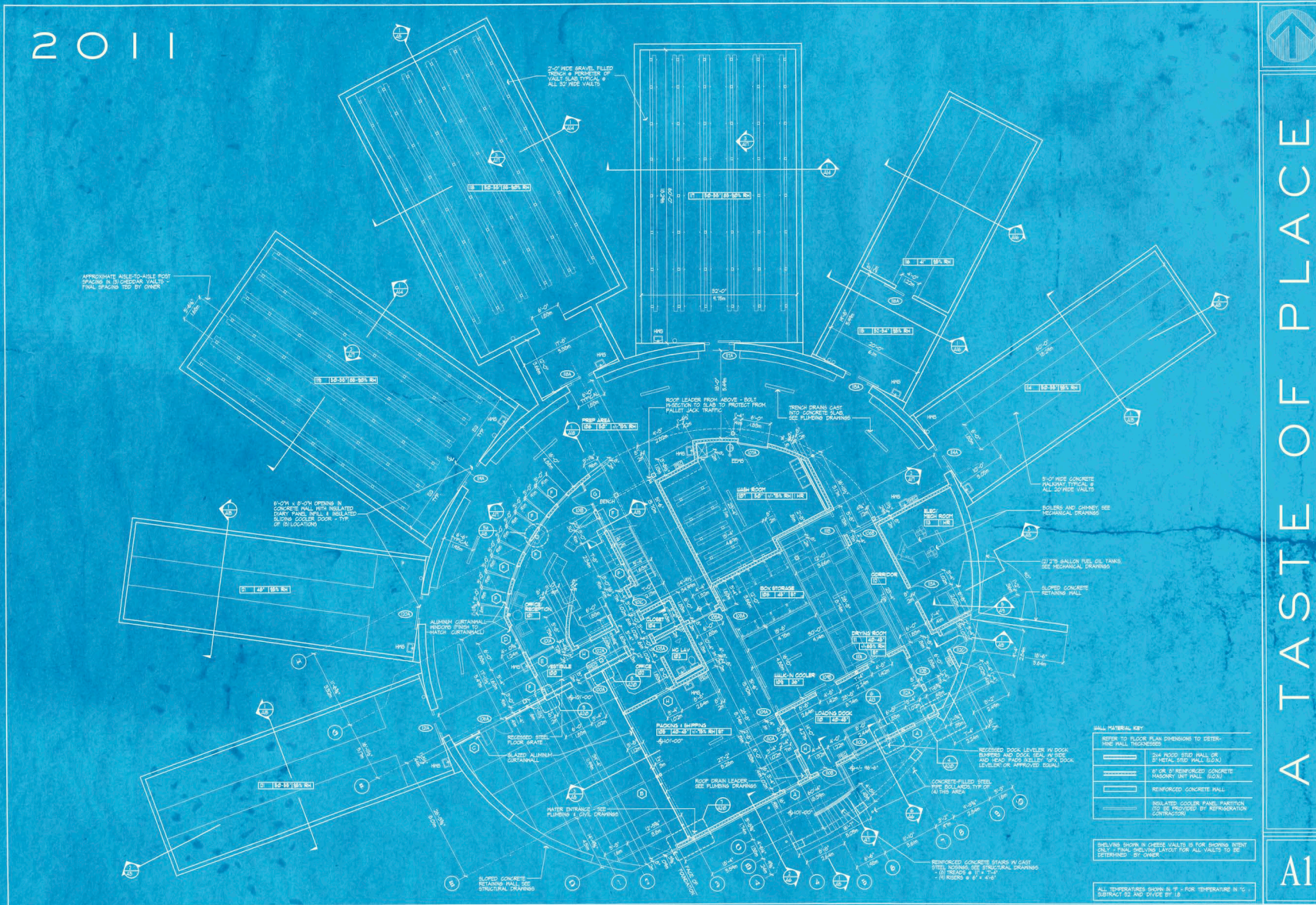


# Clothbound wins 'Best of Show' *American Cheese Society 2006*





2011



A TASTE OF PLACE

A1

# CELLARS AT JASPER HILL, GREENSBORO, VT

























**Harbison**  
1st Place - Best of Show  
American Cheese Society 2018

*The American  
Cheese Society*

**BEST OF SHOW**



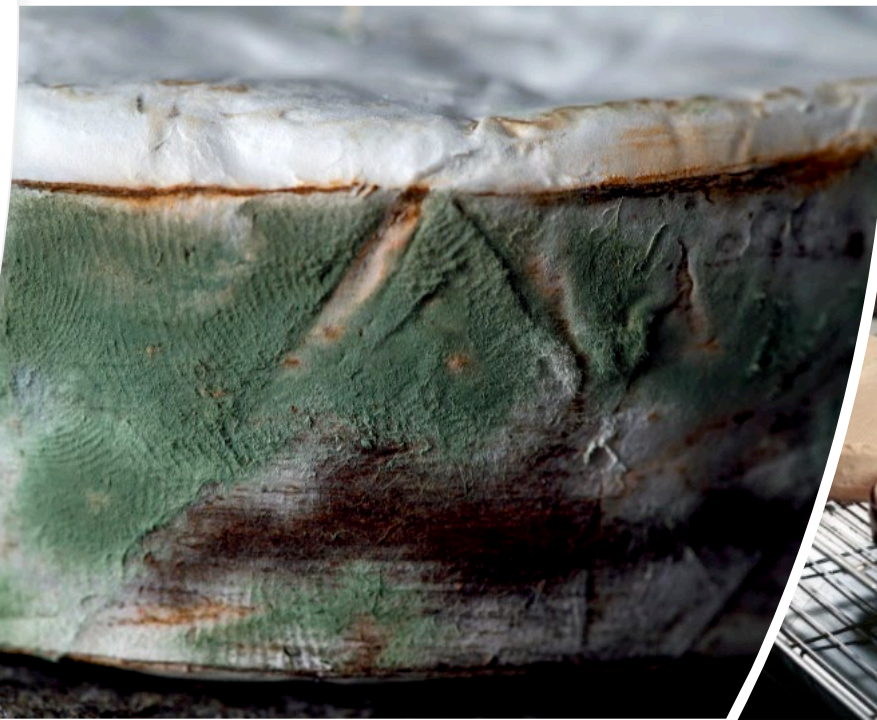
**Calderwood**  
2nd Place - Best of Show  
American Cheese Society 2018







**HARBISON  
BEST IN SHOW  
DES MOINES,  
IOWA 2018**



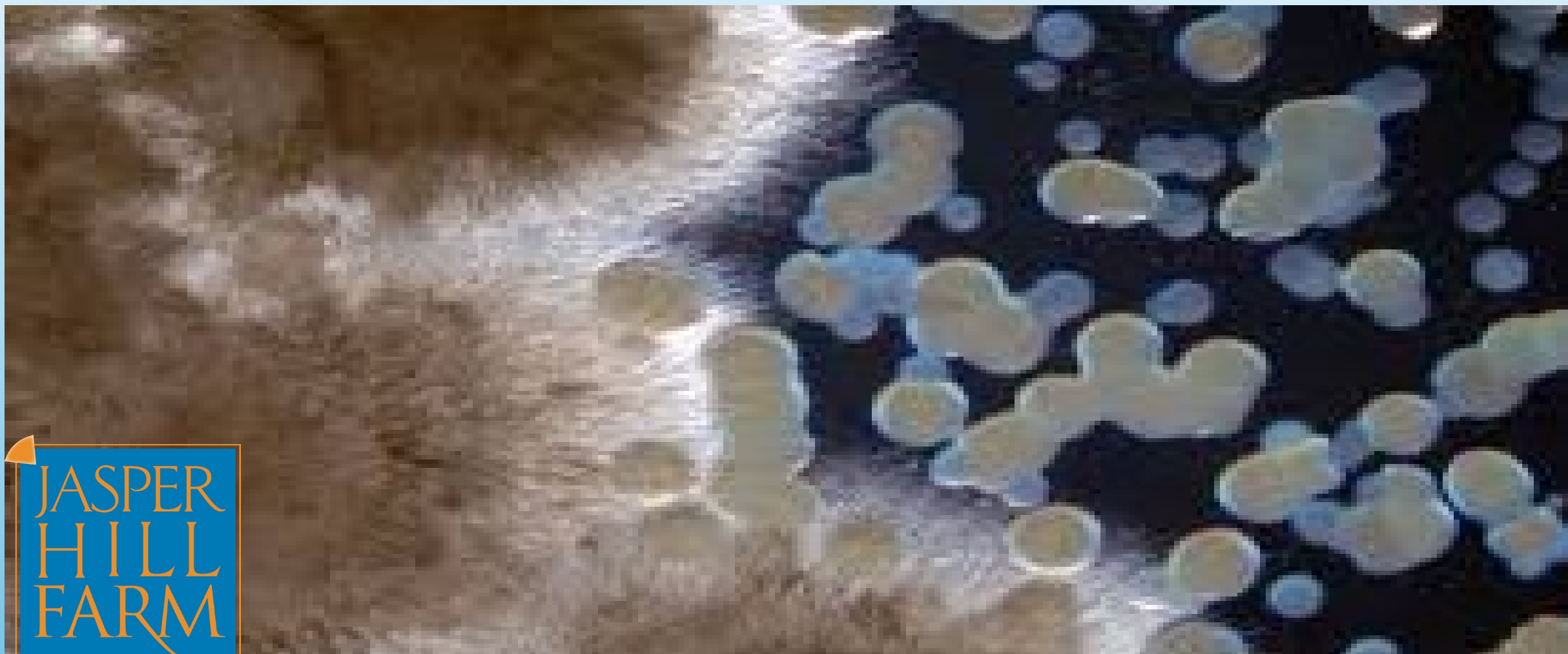


Whitney a Raw Milk  
Raclette-type  
Cheese Wins Best  
in Show July 2021





# Harnessing a Taste of Place







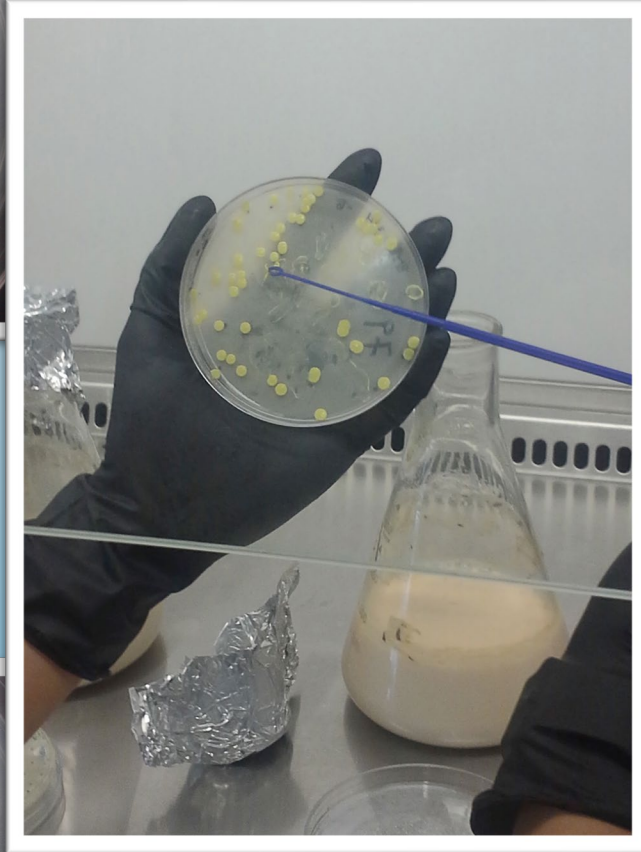
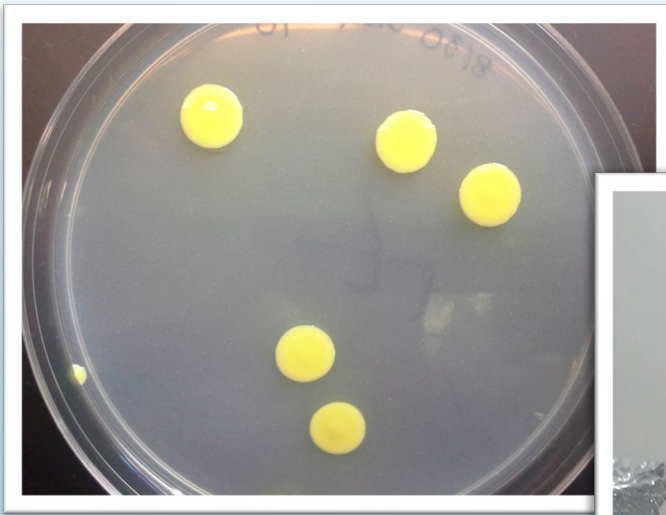














# Harnessing a Taste of Place

- Microbes are the ‘Most Local’ residents of our landscape
- There is a Direct and Linear Correlation between Microbial Diversity and Complexity of Flavor
- Microbes are the link between Practices and Products
- The Microbial Ecology of Raw Milk is the Sum of Practices on a Farm





# GREENSBORO, VERMONT

2003 - 2023



80% OF TOTAL EXP.



\$267,622,578

\$215,307,706

82%



100 MILES

\$219,933,164



# Meaningful Work in a Place We Love



...with People We Love!



